

STANDARD DEPARTURE
CHART - INSTRUMENT
(SID) - ICAO

TRANSITION ALTITUDE
10000 FT

AKTOBE TOWER 120.90
AKTOBE ATIS (EN) 126.0
AKTOBE ATIS (RU) 127.80

ADRAT 5D, ALGAS 5D, BOLGO 6D,
GULD0 4D, LARPI 5D, LITBA 5D,
LURUM 4D, MULTA 5D, ODILA 6D,
OMITO 5D, RIGDO 5D, SANIR 5D,
TIKTO 5D.

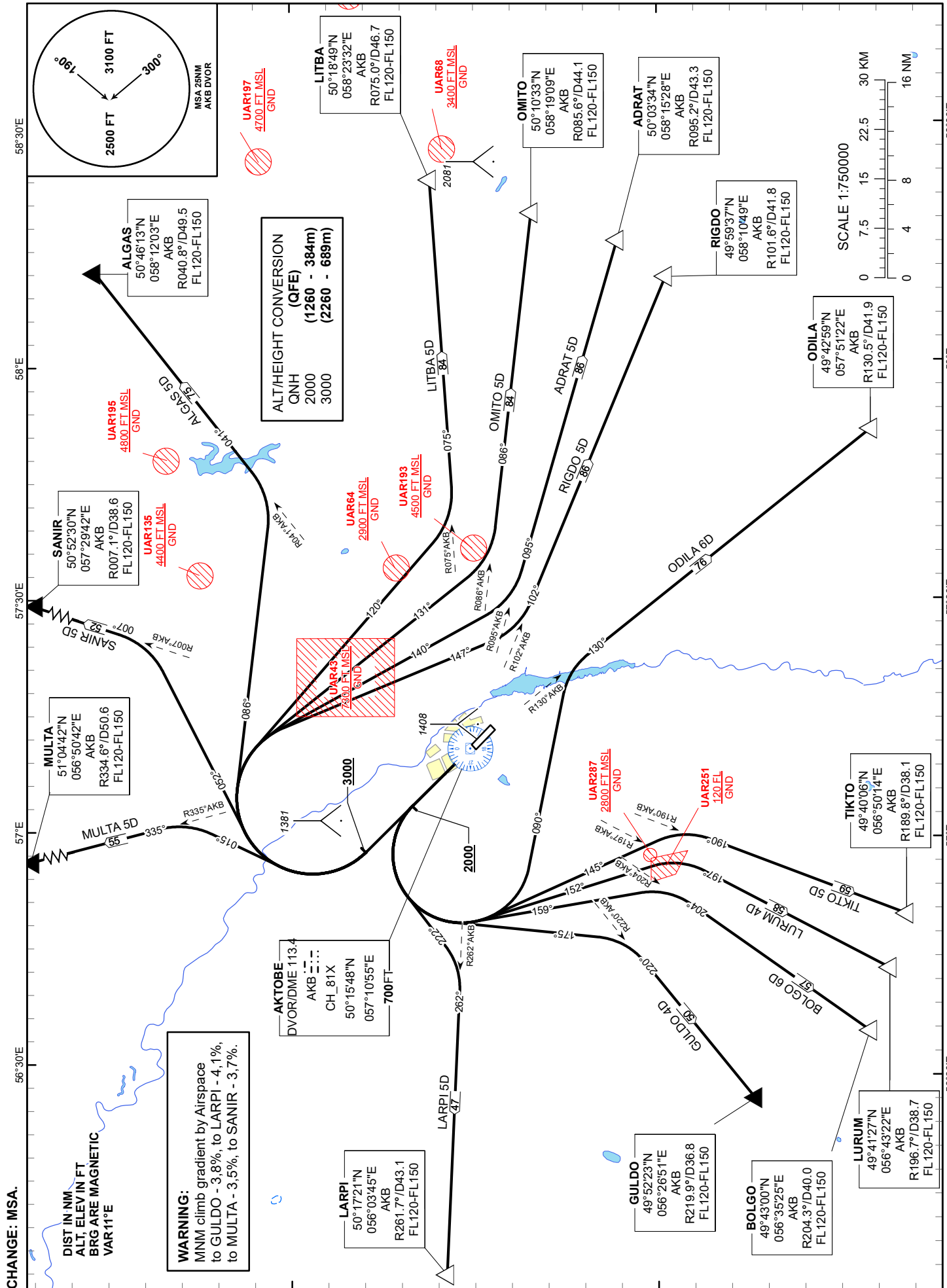
AKTOBE
RWY 30

N.03.09

N.09

N.03.09

N.09



CHANGE: MSA.

DIST IN NM
ALT, ELEV IN FT
BRG ARE MAGNETIC
VAR 11°E

WARNING:
MNM climb gradient by Airspace
to GULD0 - 3.8%, to LARPI - 4.1%,
to MULTA - 3.5%, to SANIR - 3.7%.

AKTOBE
DME/DME 113.4
AKB ---
CH 81X
50°15'48"N
057°10'55"E
700 FT

LARPI
50°17'21"N
056°03'45"E
R261.7°/D43.1
FL120-FL150

GULD0
49°52'23"N
056°26'51"E
R219.9°/D36.8
FL120-FL150

BOLGO
49°43'00"N
056°35'25"E
R204.3°/D40.0
FL120-FL150

LURUM
49°41'27"N
056°43'22"E
R196.7°/D38.7
FL120-FL150

TIKTO
49°40'06"N
056°50'14"E
R189.8°/D38.1
FL120-FL150

ODILA
49°42'59"N
057°51'22"E
R130.5°/D41.9
FL120-FL150

RIGDO
49°59'37"N
058°10'49"E
R101.6°/D41.8
FL120-FL150

ADRAT
50°03'34"N
058°15'28"E
R095.2°/D43.3
FL120-FL150

OMITO
50°10'33"N
058°19'09"E
R085.6°/D44.1
FL120-FL150

LITBA
50°18'49"N
058°23'32"E
R075.0°/D46.7
FL120-FL150

ALGAS
50°46'13"N
058°12'03"E
R040.8°/D49.5
FL120-FL150

SANIR
50°52'30"N
057°29'42"E
R007.1°/D38.6
FL120-FL150

MULTA
51°04'42"N
056°50'42"E
R334.8°/D50.6
FL120-FL150

STANDARD DEPARTURE ROUTES – INSTRUMENT (SID) AKTOBE RWY 30
MULTA 5D After take-off climb straight ahead to 3000 FT or above, turn RIGHT on track 015°, until intercept R335° AKB, then proceed to MULTA (R334.6° D50.6 AKB). Cross MULTA at FL120-FL150
SANIR 5D After take-off climb straight ahead to 3000 FT or above, turn RIGHT on track 052°, until intercept R007° AKB, then proceed to SANIR (R007.1° D38.6 AKB). Cross SANIR at FL120-FL150
ALGAS 5D After take-off climb straight ahead to 3000 FT or above, turn RIGHT on track 086°, until intercept R041° AKB, then proceed to ALGAS (R040.8° D49.5 AKB). Cross ALGAS at FL120-FL150
LITBA 5D After take-off climb straight ahead to 3000 FT or above, turn RIGHT on track 120°, until intercept R075° AKB, then proceed to LITBA (R075.0° D46.7 AKB). Cross LITBA at FL120-FL150
OMITO 5D After take-off climb straight ahead to 3000 FT or above, turn RIGHT on track 131°, until intercept R086° AKB, then proceed to OMITO (R085.6° D44.1 AKB). Cross OMITO at FL120-FL150
ADRAT 5D After take-off climb straight ahead to 3000 FT or above, turn RIGHT on track 140°, until intercept R095° AKB, then proceed to ADRAT (R095.2° D43.3 AKB). Cross ADRAT at FL120-FL150
RIGDO 5D After take-off climb straight ahead to 3000 FT or above, turn RIGHT on track 147°, until intercept R102° AKB, then proceed to RIGDO (R101.6° D41.8 AKB). Cross RIGDO at FL120-FL150
ODILA 6D After take-off climb straight ahead to 2000 FT or above, turn LEFT on track 090°, until intercept R130° AKB, then proceed to ODILA (R130.5° D41.9 AKB). Cross ODILA at FL120-FL150
TIKTO 5D After take-off climb straight ahead to 2000 FT or above, turn LEFT on track 145°, until intercept R190° AKB, then proceed to TIKTO (R189.8° D38.1 AKB). Cross TIKTO at FL120-FL150
LURUM 4D After take-off climb straight ahead to 2000 FT or above, turn LEFT on track 152°, until intercept R197° AKB, then proceed to LURUM (R196.7° D38.7 AKB). Cross LURUM at FL120-FL150
BOLGO 6D After take-off climb straight ahead to 2000 FT or above, turn LEFT on track 159°, until intercept R204° AKB, then proceed to BOLGO (R204.3° D40.0 AKB). Cross BOLGO at FL120-FL150
GULDO 4D After take-off climb straight ahead to 2000 FT or above, turn LEFT on track 175°, until intercept R220° AKB, then proceed to GULDO (R219.9° D36.8 AKB). Cross GULDO at FL120-FL150
LARPI 5D After take-off climb straight ahead to 2000 FT or above, turn LEFT on track 222°, until intercept R262° AKB, then proceed to LARPI (R261.7° D43.1 AKB). Cross LARPI at FL120-FL150